



www.jtzgy.com
www.jtattach.com

详细情况请与当地代理商联系
For more information, please contact local agents.

本画册最终解释权归江士重工所有



COMPANY PROFILE

公司简介

烟台江土机械设备有限公司是一家集生产研发市场为一体的优秀挖掘机前端属具生产企业。公司主要生产挖掘机快速连接器，液压夯，抓木器，抓石器，液压剪，拆车剪，铲斗夹，拇指夹，松土器等。所有产品从配件到发货前检验都有严格的把控。随着企业不断的发展，江土产品已遍布世界各地，企业不断创新改进先后获得了ISO9001质量体系认证、CE认证、实用新型技术专利等。

公司始终以用户满意为宗旨，以精益求精为目标，全心全意服务于广大客户，衷心希望我们精湛的专业技能和丰富的技术服务经验，让您享受到更加优质、快捷，周到的服务。

Yantai Jiangtu Mechanical Equipment Company is a leading manufacturer for excavator attachments in China. All products' quality are strictly under control from processing to delivery. By continuous innovation and improvement, the company has got ISO 9001, CE certifications and technical patents successively. Our products have been sold to domestic and oversea customers including Russia, Japan, Korea, Malaysia, India, Australia, Isreal, etc, and long term partnerships have been developed.

Our mission is Quality first, Service foremost, and Innovation paramount. Uncompromising commitment to high quality and thoughtful service wins us a good reputation and more coming partners. And we will keep on improving the products to better serve the world market. We are looking forward to working with you!



双保险连接器 DOUBLE-LOCKING QUICK HITCH COUPLER

适用对象
所有型号挖掘机

产品特点
双保险安全锁手自一体，安全系数增加百分百，使用寿命更持久。

Applications
All models of excavators

Main features
One manual and one auto-locking safety system, doubled safety and longer operation life.



类别 Category	Unit	mini	JT-02	JT-04	JT-06	JT-08	JT-10	JT-14
工作压力 Oil pressure	bar	25-300	25-300	25-300	25-300	25-300	25-300	25-300
必要流量 Operating flow	lpm	15-25	15-25	15-25	15-25	15-25	15-25	15-25
适用挖机 Carrier	ton	1.5-3	4-6	6-9	12-16	17-23	29-36	30-40
斗轴直径 Pin diameter	mm	20-40	40-45	45-60	60-70	70-80	90-100	100-110
重量 Weight	kg	25-40	50-75	70-110	180-250	300-400	550-650	650-800

双保险机械式连接器 DOUBLE-LOCKING MECHANICAL QUICK HITCH COUPLER

适用对象
1.5-25吨挖掘机

产品特点
• 解决轴距差距大，采购成本低；
• 双保险更安全。

Applications
Fit 1.5 ton to 25 ton excavators

Main features
• Long stroke for different pin center distances, lower procurement cost.
• Double locking safety system, much safer.



类别 Category	Unit	mini	JT-02	JT-04	JT-06	JT-08
适用挖机 Carrier	ton	1.5-3	4-6	6-9	12-16	17-23
斗轴直径 Pin diameter	mm	20-40	40-45	45-60	60-70	70-80
重量 Weight	kg	25-40	50-75	70-110	180-250	300-400
轴距行程范围 Stroke range	mm	90-160	220-320	220-350	350-450	420-550

具体数据根据挖掘机型号及所配设备尺寸有所浮动，产品不断改进升级中，数据改动不再另行通知。
The specifications may vary with different excavators and are subject to change without prior notice for products improvement.

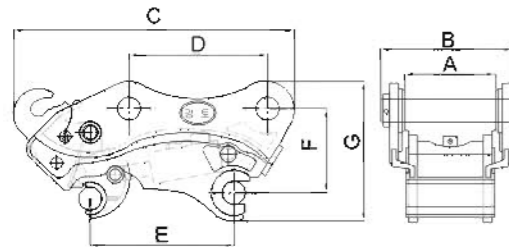
液压快速连接器 QUICK HITCH COUPLER



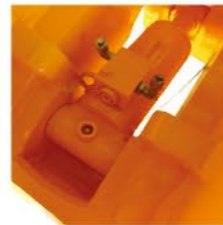
P TYPE



H TYPE



进口油缸使用更持久，
更耐用
Reinforced cylinder with
imported oil seals.
(Simrit Germany brand)



伸缩虎口更加耐磨，
更加坚固，防止断裂
High-abrasive front
tiger mouth design.



安全销更加精准、
牢固、安全
Strong safety pin
at accurate position.



类别 Category	Unit	JT-mini	JT-02	JT-04	JT-06	JT-08	JT-08S	JT-10	JT-17
总长度C Length C	mm	300-450	520-542	581-610	760	920-955	950-1000	965-1100	1005-1150
总宽度B Width B	mm	150-250	260-266	265-283	351-454	450-483	445-493	543-572	602-666
总高度G Height G	mm	225-270	312	318	400	512	512-540	585	560-615
小臂开档A Arm width A	mm	82-180	155-172	181-205	230-317	290-345	300-350	345-425	380-480
轴中心距D Pins center distance	mm	95-220	220-275	290-350	350-400	430-480	450-505	485-530	520-630
轴直径 Pin diameter	mm	20-45	40-45	45-55	50-70	70-90	90	90-100	100-110
油缸伸缩距离E Cylinder stroke E	mm	95-200	200-300	300-350	340-440	420-510	450-530	460-560	500-650
上下轴间距F Vertical pins center distance	mm	170-190	200-210	205-220	240-255	300	320	350-370	370-380
重量 Weight	kg	30-40	50-75	80-110	170-210	350-390	370-410	410-520	550-750
工作压力 Working pressure	kgf/cm ²	30-400	30-400	30-400	30-400	30-400	30-400	30-400	30-400
必要流量 Necessary flow	l	10-20	10-20	10-20	10-20	10-20	10-20	10-20	10-20
适用于挖机吨位 Excavator	ton	1-4	4-6	6-8	12-16	18-25	25-26	26-30	30-40

02 具体数据根据挖掘机型号及所配设备尺寸有所浮动，产品不断改进升级中，数据改动不再另行通知。
The specifications may vary with different excavators and are subject to change without prior notice for products improvement.

旋转抓木器 ROTATING WOOD GRAPPLE



适用对象

抓木头、抓大物件杂物

特点

- M+S马达带刹车功能,油缸带美国SUN安全平衡阀;
- 根据需求可做加宽型,下抓可定做3+2,4+3,5+4;
- 电控和液控系统带美国SUN节流阀和减压阀、溢流阀,更安全稳定,操作方便故障率低。

Application

Wood and other large scraps handling, moving, loading and organizing.

Main features

- Driven by M+S motor with brake valve; cylinder with USA safety valve(USA SUN brand).
- 3+2, 4+3, 5+4 fingers for your option
- Throttle, pressure reducing valve, relief valve (all the valves are USA SUN brand) are in electrical and hydraulic control system, making it safer and much more stable and durable in use



类别 Category	单位 Unit	JT-02	JT-04	JT-06	JT-08	JT-10	JT-17
夹口尺寸 Max jaw opening	mm	1300	1400	1800	2300	2500	2500
工作压力 oil pressure	kg/cm ²	110-140	120-160	150-170	160-180	160-180	180-200
必要流量 Necessary flow	lpm	30-55	50-100	90-110	100-140	130-170	200-250
油缸容量 Max. cylinder force	ton	4.0*2	4.5*2	8.0*2	9.7*2	12*2	12*2
重量 Weight	kg	320	390	740	1380	1700	1900
适用挖机吨位 Carrier	ton	4-6	7-11	12-16	17-23	24-30	31-40

03 具体数据根据挖掘机型号及所配设备尺寸有所浮动，产品不断改进升级中，数据改动不再另行通知。
The specifications may vary with different excavators and are subject to change without prior notice for products improvement.

旋转抓石(钢)器 ROTATING STONE/ SCRAP STEEL GRAPPLE



适用对象

抓玉石、大理石等珍贵石材，抓废铁

特点

- M+S马达带刹车功能,油缸带美国SUN安全平衡阀;
- 根据需求可做加宽型,下抓可定做3+2,4+3,5+4;
- 电控和液控系统带美国SUN节流阀和减压阀、溢流阀,更安全稳定,操作方便故障率低。

Application

Stones, steel and iron scraps demolishing, Scrap handling, Cleaning, Moving, Loading, Sorting and Organizing materials in order.

Main features

- Driven by M+S motor with brake valve; cylinder with USA safety valve(USA SUN brand).
- Custom service is available.(3+2, 4+3, 5+4 fingers for your option)
- Throttle, pressure reducing valve, relief valve (all the valves are USA SUN brand)are in electrical and hydraulic control system, making it safer and much more stable and durable in use

类别 Category	单位 Unit	JT-02	JT-04	JT-06	JT-08	JT-10	JT-17
重量 Weight	kg	300	390	740	1380	1700	1900
夹口尺寸 Max jaw opening	m/m	1300	1400	1800	2300	2500	2500
工作压力 Oil pressure	kg/cm ²	110-140	120-160	150-170	160-180	160-180	180-200
设定压力 Set up pressure	kg/cm ²	170	180	190	200	210	250
工作流量 Operating flux	lpm	30-55	50-100	90-110	100-140	130-170	200-250
适用挖机吨位 Carrier	ton	4-6	7-11	12-16	17-23	24-30	31-40

04 具体数据根据挖机型号及所配设备尺寸有所浮动,产品不断改进升级中,数据改动不再另行通知。
The specifications may vary with different excavators and are subject to change without prior notice for products improvement.

旋转抱式抓木器 ROTATING LIGHT WOOD GRAPPLE

适用对象

抓木头,抓农作物等。

产品特点

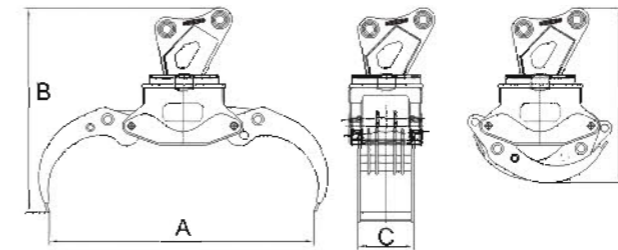
- M+S马达带刹车功能,油缸带美国SUN安全平衡阀;
- 根据需求可做加宽型;
- 电控和液控系统带美国SUN节流阀和减压阀、溢流阀,更安全稳定,操作方便故障率低。

Applications

Light duty job like waste handling cleaning and organizing.

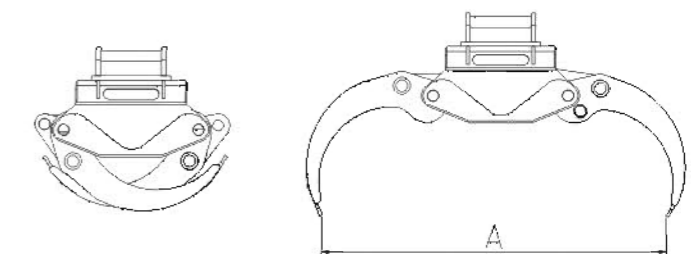
Main features

- Driven by M+S motor with brake valve; cylinder with USA safety valve(USA SUN brand).
- Throttle, pressure reducing valve, relief valve (all the valves are USA SUN brand)are in electrical and hydraulic control system, making it safer and much more stable and durable in use.
- Custom service is available.



类别 Category	Unit	JT-02	JT-04	JT-06	JT-08
旋转角度 Rotation angle		360	360	360	360
工作压力 Oil pressure	bar	110-140	120-160	150-180	160-180
工作流量 Operating flow	lpm	30-55	50-100	90-110	100-140
适用挖机 Carrier	ton	4-6	6-9	12-16	17-23
开档A Open width	mm	1200	1350	1600	1900
高度B Height	mm	1250	1380	2000	2200
宽度C Width	mm	480	510	580	650
高度D Height	mm	820	1000	1250	1500
重量 Weight	kg	240	340	850	1100

抱式抓木器 LIGHT WOOD GRAPPLE



类别 Category	Unit	JT-MINI	JT-MINI	JT-MINI	JT-02	JT-04	JT-06	JT-06	JT-08
A	mm	930	1299	1299	1370	1520	1880	1900	2530
工作压力 Oil pressure	bar	100-130	100-130	100-130	110-140	120-160	150-170	150-170	160-180
适用挖机 Excavator weight	ton	1.5	3	4	5	8-10	11-13	14-16	20-26
重量 Weight	kg	85	190	200	290	380	420	540	860

05 具体数据根据挖机型号及所配设备尺寸有所浮动,产品不断改进升级中,数据改动不再另行通知。
The specifications may vary with different excavators and are subject to change without prior notice for products improvement.

加强抓 DEMOLITION GRAPPLE

适用对象

一些强硬建筑垃圾的装卸及拆建，废铁的装卸主要高强度杂物的拆卸。

特点

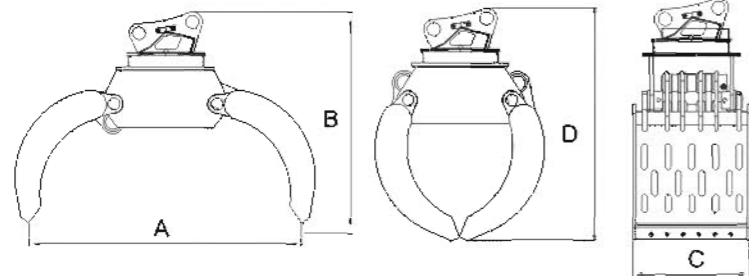
- 大小杂物都可以一起抓起；
- 耐磨板材设计，更耐磨，使用更持久；
- M+S马达带刹车功能，油缸带美国SUN安全平衡阀；
- 电控和液控系统带美国SUN节流阀和减压阀、溢流阀，更安全稳定，操作方便故障率低。

Application

Demolition of solid structures, Scrap handling, Cleaning, Moving, Loading, Sorting and Organizing materials in order.

Main features

- Capable of grabbing materials of different sizes in bulk.
- Abrasion resistant steel, durable in use.
- Driven by M+S motor with brake valve; cylinder with USA safety valve (USA SUN brand).
- Throttle, pressure reducing valve, relief valve (all the valves are USA SUN brand) are in electrical and hydraulic control system, making it safer and much more stable and durable in use.



类别 Category	Unit	JT-02	JT-04	JT-06	JT-08
旋转角度 Rotation angle		360	360	360	360
工作压力 Oil pressure	bar	110-140	120-160	150-180	160-180
工作流量 Operating flow	lpm	30-55	50-100	90-110	100-140
适用挖机 Carrier	ton	4-6	6-9	12-16	17-23
开档A Open width	mm	1150	1200	1550	1850
高度B Height	mm	860	860	1100	1350
宽度C Width	mm	550	600	700	950
重量 Weight	kg	280	350	950	1350

液压废料抓 ECCENTRIC PIN HYDRAULIC GRAPPLE

适用对象

园林，垃圾场，矿山。

产品特点

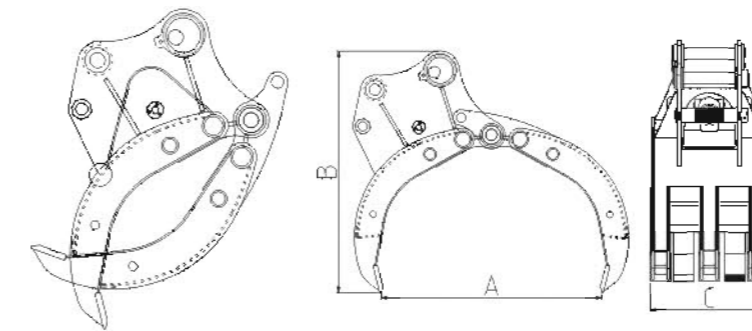
结构新颖 坚固，可调轴距。

Applications

Widely used in waste recycle yards, gradens and mines.

Main features

Eccentric pin design making pin center distance adjustable. NM400 steel.



类别 Category	Unit	JT-MINI	JT-MINI	JT-02	JT-04	JT-06	JT-08
A	mm	610	750	807	890	1225	1530
B	mm	670	900	1000	1087	1320	1680
C	mm	404	400	492	542	620	820
工作压力 Oil pressure	bar	80-110	80-110	110-140	120-160	150-170	160-180
适用挖机 Excavator weight	ton	1.5	3	5	8	12	20
重量 Weight	kg	130	280	300	370	660	1060

液压夹 HYDRAULIC GRAPPLE

适用对象

木制建筑结构的拆装分类摆放以及建筑、生活垃圾杂物的清理、装卸。

特点

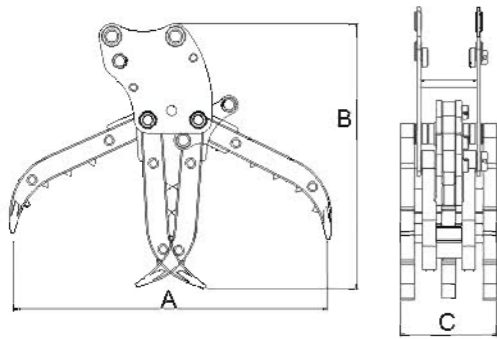
- 操作方便多功能机械手；
- 油缸带美国SUN平衡安全阀，更安全效率更高；
- 安装方便，直接装到破碎锤管路即可；
- 根据需求可做3+4、5+4等不同宽度不同角度。

Applications:

Demolition of wooden structures, Scrap handling, Cleaning, Moving, Loading, Sorting and Organizing materials in order.

Main features

- Multi-functional and easy to operate.
- Equipped with balance valve (USA SUN brand), safe and high efficient.
- Easy installation.(share the same pipes with breaker)
- Custom service is available. (3+4 fingers/5+4 fingers for your option.)



类别 Category	Unit	mini	JT-02	JT-04	JT-06	JT-08
工作压力 Oil pressure	bar	80-110	110-140	120-160	150-170	160-180
工作流量 Operating flow	lpm	25-40	30-55	50-100	90-110	100-140
适用挖机 Carrier	ton	1.5-3	4-6	6-9	12-16	17-23
开档A Open width	mm	960	1200	1600	1800	2200
高度B Height	mm	900	1160	1360	1575	1880
宽度C Width	mm	270	425	480	560	695
重量 Weight	kg	65-150	120-150	150-180	400-550	650-800

08 具体数据根据挖掘机型号及所配设备尺寸有所浮动，产品不断改进升级中，数据改动不再另行通知。
The specifications may vary with different excavators and are subject to change without prior notice for products improvement.

液压夯 HYDRAULIC PLATE COMPACTOR

适用对象

高速公路铁路护坡及路面的平整，工地及厂房地面平整。

特点

进口轴承，意大利节流阀、单向阀，美国的安全阀，操作稳定。

Application

Leveling of high-speed way and railway slopes, roads, construction sites and building floors.

Main features

Imported bearing (Japan) throttle (Italy) and safety valves(USA), stable and high efficient performance.



原装进口马达，更加有效增加密度。
PERMCO motor, stable and powerful.



原装进口阀安全可靠，操作方便。
Imported relief valve protecting motor well.



减震胶块更持久耐用。
Long service life rubber pads.

类别 Category	单位 Unit	JT-04	JT-06	JT-08	JT-10
总高 Height	mm	750	930	1000	1100
总宽 Width	mm	550	700	900	900
打击力 Impulse force	ton	4	6.5	11	15
振动频率 Vibration frequency	rpm	2000	2000	2200	2200
油流量 Oil flow	l/min	45-85	85-105	120-170	120-170
压力 Operating pressure	kg/cm ²	100-130	100-150	150-200	150-200
打击面积 Bottom measurement	mm	900*550	1160*700	1350*900	1500*1000
重量 Weight	kg	550-600	750-850	900-1000	1100-1300
适用挖机吨位 Carrier	ton	4-10	12-16	18-24	30-40



09 具体数据根据挖掘机型号及所配设备尺寸有所浮动，产品不断改进升级中，数据改动不再另行通知。
The specifications may vary with different excavators and are subject to change without prior notice for products improvement.

莲花抓 ORANGE PEEL GRAPPLE

适用对象

汽车吊, 挖机, 抓取废钢、废塑料、垃圾等。

特点

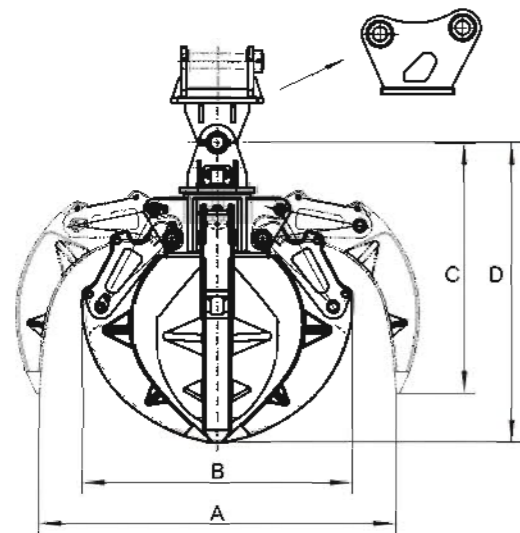
- 销轴经过热处理调质;
- 花瓣选用NM400-500耐磨板;
- 使用寿命长; 抓举力量大;
- 可增加360度选择功能。

Application

Steel scraps, wastes handling, loading and unloading.

Main features

- Using NM500 steel and all pins are heat treated making our grapple with a very long service life and high carrying capacity.
- 360° rotation function available.



类别	Category	Unit	JT-04	JT-06	JT-08	JT-10
张开宽度(A)	Open width	mm	1260	1580	1975	2275
闭合宽度(B)	Close width	mm	970	1210	1510	1740
高度(C)	Height	mm	890	1110	1390	1600
高度(D)	Height	mm	1060	1325	1660	1910
油缸推力	Cylinder thrust	ton	4	6.5	10.5	13
工作压力	Oil pressure	MPa	18-21	21-25	21-25	21-25
适用挖机	Excavator weight	ton	5-9	10-16	17-23	24-30
重量	Weigh	kg	350-400	700-800	950-1100	1500-1700

液压剪 HYDRAULIC CRUSHER

适用对象

破碎拆除化工设备; 破碎拆除房屋。

特点

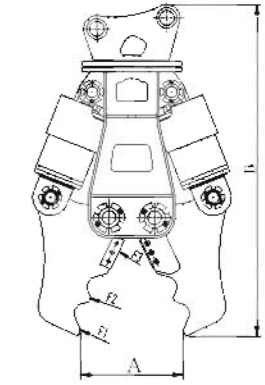
- 刀牙选用悍达NM400-500耐磨板; 耐用; 破碎力大; 加工精度高; 不易变形。
- 可增加360度选择功能。

Application

Can be used to demolish buildings and constructions.

Main features

- Material Hardox 400-500, High precision; more durable in use.
- 360° rotation function available



类别 Category	Unit	JT-MINI	JT-02	JT-04	JT-06	JT-08	JT-10
A	mm	300	630	630	850	1050	1100
B	mm	835	1400	1400	1800	2200	2300
破碎力F1 Crushing force	ton	18	34	34	640	84	92
破碎力F2 Crushing force	ton	25	51	51	90	127	142
破碎力F3 Crushing force	ton	65	141	141	28	300	350
工作压力 Oil pressure	MPa	21	20-25	20-26	25-30	25-30	25-30
适用挖机 Excavator weight	ton	1.5-3	4-6	7-10	12-17	18-27	28-38
重量 Weight	kg	200-210	550-600	600-650	1200-1300	1800-2000	2200-2300
圆钢符号	mm	14	16	16	25	30	35

钢材剪 HYDRAULIC SCRAP SHEAR

适用对象

剪切各种钢结构, 用于废钢厂, 报废汽车厂, 化工厂。

特点

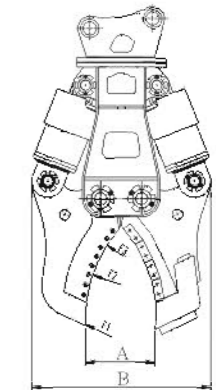
- 刀牙选用悍达NM400-500耐磨板; 耐用; 破碎力大; 加工精度高; 不易变形。
- 可增加360度选择功能。

Application

widely used in steel scrap and scrap car factories.

Main features

- Material Hardox NM400-500 steel. Durable in use, high level machining precision and high breaking capacity.
- 360° rotation function available.



类别 Category	Unit	JT-02	JT-04	JT-06	JT-08	JT-10
A	mm	300	350	415	515	625
B	mm	565	875	1115	1270	1560
剪切力F1 Crushing force	ton	9	20	41	70	100
剪切力F2 Crushing force	ton	13	30	64	113	145
剪切力F3 Crushing force	ton	31	64	157	236	393
工作压力 Oil pressure	MPa	20-25	20-25	25-28	28-30	28-30
适用挖机 Excavator weight	ton	2-4	5-10	12-17	18-27	28-38
重量 Weight	kg	200-300	600-650	1200-1300	1900-2100	2800-3000
圆钢符号	mm	15	20	25	30	35
板条	mm	6	8	10	12	16
H钢	mm	50	70	100	140	200

破碎钳 HYDRAULIC PULVERIZER

适用对象

粉碎碎房屋梁柱；水泥杆等。

特点

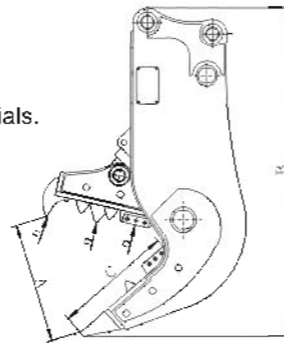
- 材料选用悍达NM400-500耐磨板；精加工；破碎和剪断钢筋一体功能，不变形。破碎力量大。
- 可增加360度选择功能。

Application

Crush beam columns and concrete building materials.

Main features

- Material Hardox 400-500; high precision; with both crush and cut functions. Durable in use.
- 360°rotation function available.



类别	Category	Unit	JT-06	JT-08	JT-10
A		mm	710	850	930
B		mm	1940	2287	2540
C		mm	720	820	910
破碎力 F1	Crushing force	ton	65	80	90
破碎力 F2	Crushing force	ton	100	130	150
破碎力 F3	Crushing force	ton	150	200	247
工作压力	Oil pressure	MPa	25-30	25-30	25-30
适用挖机	Excavator weight	ton	12-16	18-27	28-38
重量	Weight	kg	1300-1400	1800-2000	2000-2100
圆钢符号	●	mm	25	30	35

拆车剪 HYDRAULIC CAR SCRAP SHEAR

适用对象

拆废钢；分解报废车；拆除钢结构建筑物。

特点

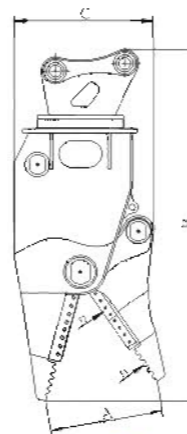
- 材料选用悍达NM400-500耐磨板；精加工；耐用坚固不变形；
- 刀片不易碎；前端设计鳄鱼嘴式撕咬功能；
- 可增加360度选择功能。

Application

Can be used to split scraped car and steel products.

Main features

- Material Hardox 400-500; High precision; more durable in use.
- High quality blade. Can snap like a crocodile.
- 360°rotation function available.



类别	Category	Unit	JT-06	JT-08	JT-10
A		mm	685	760	840
B		mm	2140	2380	2600
C		mm	850	945	1040
剪切力F1	Crushing force	ton	40	51	60
剪切力F2	Crushing force	ton	105	122	150
工作压力	Oil pressure	MPa	20-25	25-30	25-30
适用挖机	Excavator weight	ton	10-16	18-27	28-38
重量	Weight	kg	1400-1600	1700-1800	2200-2500

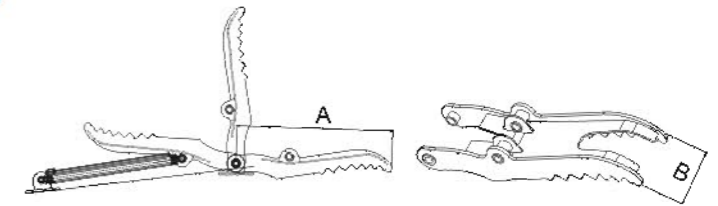
拇指夹 HYDRAULIC THUMB

适用对象

辅助挖斗有更强的功能

特点

- 一指多用，简便的辅助装置，成本低，效率高；
- 安装方便，操作灵变，根据不同需求设计定做。



Applications

Make buckets much more functional and keep rocks or other objects from dropping.

Main features

- Easy to install and operate.
- Custom service available.
- Fit several buckets. Supportive tool: lower the cost and improve the efficiency.



类别	Category	Unit	JT-02	JT-04	JT-06	JT-08
工作压力	Oil pressure	bar	110-140	120-160	150-170	160-180
工作流量	Operating flow	lpm	30-55	50-100	90-110	100-140
适用挖机	Carrier	ton	4-6	6-9	12-16	17-23
长度A	Length A	mm	600-1100	800-1400	1200-1500	1400-1700
宽度B	Width	mm	200-400	200-400	350-500	400-640
重量	Weight	kg	150	200	500	650

铲斗夹 THUMB BUCKET

适用对象

建筑垃圾生活垃圾杂物的清理装卸，岩石抓斗、工程抓。

特点

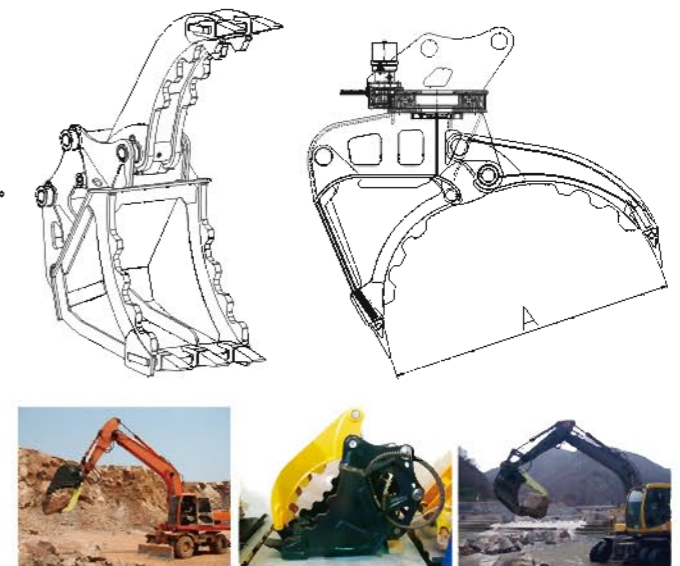
- 更先进的一体式垃圾清理斗，岩石装卸抓斗等。
- 耐磨板材设计，更耐磨，使用更持久。

Application

Demolishing, Scrap handling, Cleaning, Moving, Loading, Sorting and Organizing materials in order.

Main features

- Advanced integrated bucket for rock handling and scraps cleaning.
- Abrasion resistant steel, durable in use.



类别	Category	Unit	JT-MINI	JT-02	JT-04	JT-06	JT-08
旋转角度	Rotation angle		360	360	360	360	360
工作压力	Oil pressure	bar	80-120	110-140	120-160	150-170	160-180
工作流量	Operating flow	lpm	25-40	30-55	50-100	90-110	100-140
适用挖机	Carrier	ton	1.5-3	4-6	6-9	12-16	17-23
开档A	Open width	mm	750	1260	1300	1700	2200
重量	Weight	kg	108	263	280	730	1260

液压破碎锤 HYDRAULIC BREAKER

适用对象

应用于矿山、爆破、建筑、采石场等，可安装于所有普通液压挖掘机、小型挖掘机及其它载货设备上，如滑移装载机、反铲装载机、起重机、伸缩式装卸机、轮式装载机等机械。

产品特点

1. 缸体和主阀：精密加工，防止拉伤；
2. 活塞与中缸体一对一配磨；
3. 钎杆：42CrMo，性能可靠；
4. 油封：原装进口NOK油封。

Application

Used for mining, demolition, construction, quarry.

It can be mounted on all common hydraulic excavator as well as mini excavator and other carrier like skid steer loader, backhoe loader, crane, telescopic handler, wheel loader and other machinery.

Main features

1. Cylinder & valves: prevents scuffing with precision finishing treatment.
2. Piston: every piston tolerance machined perfectly according to each cylinder.
3. Chisel: 42CrMo, exceptional performance and reliability.
4. Seal kit: original NOK.

SILENCED TYPE SIDE TYPE TOP TYPE



轻型 LIGHT TYPE								
类别 Category	Unit	JTB400	JTB450	JTB530	JTB680	JTB750	JTB850	JTB1000
机芯重量 Body weight	kg	50	70	90	155	210	280	480
总重量 Total weight (三角/直角/静音) (side/top/silence)	kg	70/72/100	95/95/129	140/150/155	260/343/360	330/405/450	550/633/730	760/866/1007
工作流量 Working flow rate	L/min	20-40	20-40	25-45	36-60	50-90	45-85	80-120
工作压力 Working pressure	Bar	90-120	90-120	90-120	110-140	120-170	127-147	150-170
冲击频率 Impact rate	bpm	700-1200	700-1200	500-1100	500-900	400-800	400-800	400-650
油管直径 Hose diameter	inch	1/2	1/2	1/2	1/2	1/2	1/2	3/4
钎杆直径 Chisel diameter	mm	40	45	53	68	75	85	100
适用挖机 Suitable carrier	ton	0.8-2	1.2-3	2.5-3	3-7	6-9	7-14	10-15

中型 MEDIUM TYPE				重型 HEAVY TYPE				
类别 Category	Unit	JTB1350	JTB1400	JTB1550	JTB1650	JTB1750	JTB1800	JTB1900
机芯重量 Body weight	kg	846	920	1092	1442	1930	2295	2520
总重量 Total weight (三角/直角/静音) (side/top/silence)	kg	1655/1850/1898	1767/2052/2000	2218/2380/2450	2750/3150/2900	3910/4103	4227/4322	4850
工作流量 Working flow rate	L/min	130-170	150-190	150-230	200-260	210-280	280-350	280-350
工作压力 Working pressure	Bar	160-185	165-195	170-200	180-200	180-200	190-210	190-210
冲击频率 Impact rate	bpm	400-650	400-800	250-400	250-400	250-350	230-320	230-320
油管直径 Hose diameter	inch	1	1	1	1.1/4	1.1/4	1.1/4	1.1/4
钎杆直径 Chisel diameter	mm	135	140	155	165	175	180	190
适用挖机 Suitable carrier	ton	18-25	20-30	27-36	30-45	40-50	45-55	50-60

旋挖钻 EARTH AUGER

适用对象

应用于植树，电线杆孔，钻井，光伏电桩等领域。可安装于所有普通液压挖掘机、小型挖掘机及其它载货设备上，如滑移装载机、反铲装载机、起重机、伸缩式装卸机、轮式装载机等机械。

特点

1. 伊顿马达，带溢流阀；
2. 齿轮加工工艺采用航空标准；
3. 叶片采用耐磨板；
4. 设计合理，效率高寿命长。

Application

Earth Auger is a kind of digging machine. Used for tree planting, pole hole, drilling, photovoltaic pile. It can be mounted on all common hydraulic excavator as well as mini excavator and other carrier like skid steer loader, backhoe loader, crane, telescopic handler, wheel loader and other machinery.

Main features

1. Eaton motor with overflow valve.
2. Aviation standard applied in processing of gear.
3. Wear resistant steel impeller.
4. Reasonable design, high efficiency and longer life time.



类别 Category	Unit	JTMINI	JT-02	JT-04	JT-06	JT-06S	JT-08	JT-08S
适用挖机 Excavator Weight	ton	2.5-4.5	4.5-6	5-8	13-17	15-17	15-20	17-30
机体尺寸 Measurement	mm	φ200X585	φ270X850	φ270X850	φ300X945	φ300X945	φ345X1155	φ345X1155
重量 Weight	kg	60	100	152	170	175	265	272
工作压力 Working Pressure	bar	205	205	205	205	205	205	205
最大压力 Max Pressure	bar	310	310	310	310	310	310	310
极限扭矩 Max Torque	nm	3760	7300	8240	12300	15200	19800	24920
工作流量 Rated Oil Flow	lpm	150	150	150	150	150	150	150
最大流量 Max Oil Flow	lpm	210	225	225	170	210	210	225
油管直径 Diameter of Oil Pipe		G1/2"	G1/2"	G1/2"	G3/4"	G3/4"	G3/4"	G1"
挖掘直径和深度 Drilling diameter and depth	φ150-250 mm	3m	10m	10m	10m	10m	10m	10m
	φ300-400 mm		8m	10m	10m	10m	10m	10m
	φ450-550 mm		6m	8m	10m	10m	10m	10m
	φ600-700 mm			6m	10m	10m	10m	10m
	φ750-850 mm				10m	10m	10m	10m
φ900-1000 mm					10m	10m	10m	

起重叉 LIFTING FORK

适用对象

托盘打包好的建筑材料、草坪、肥料等的搬运叉装。

特点

高空码垛，解决叉车不便的工程，锻打一体货叉，根据要求定做不同尺寸。

Application

Load and unload any goods that in palletizing like building materials, lawn and fertilizer etc.

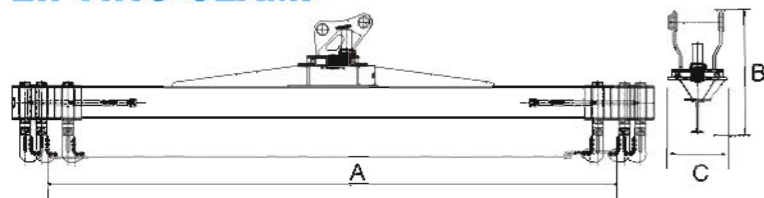
Main features

- Work high above the ground and do things forklift can't do.
- Forging in one fork.
- Custom service available.



类别 Category	Unit	JT-02	JT-04	JT-06	JT-08
适用挖机 Carrier	ton	4-6	6-9	12-16	17-23
开档A Open width	mm	1350	1450	1600	1800
叉齿长度B Fork length	mm	1000	1000	1200	1300
叉梁高度C Fork height C	mm	405	405	505	505
重量 Weight	kg	160	160	280	350

吊装夹具 LIFTING CLAMP



适用对象

吊装市政建设管道；

特点

根据不同车型设计不同长度吊装夹具。

Application

Lifting urban construction pipes

Application

Customize lifting clamp for different size pipes and excavators.

类别 Category	Unit	JT-08	JT-10	JT-17
旋转角度 Rotation angle		360	360	360
工作压力 Oil pressure	bar	160-200	180-220	200-240
工作流量 Operating flow	lpm	70-120	80-130	90-140
适用挖机 Carrier	ton	20-25	30-36	40-50
长度A length	mm	选装设计	选装设计	选装设计
高度B Height	mm	选装设计	选装设计	选装设计
宽度C Width	mm	选装设计	选装设计	选装设计

16 具体数据根据挖掘机型号及所配设备尺寸有所浮动，产品不断改进升级中，数据改动不再另行通知。
The specifications may vary with different excavators and are subject to change without prior notice for products improvement.

松土器 RIPPER

适用对象

适用对象风化石硬土、冻土层有裂缝的岩层

特点

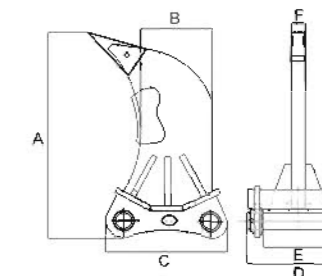
耐磨保性能板材，不易断裂

Application

Ripping hard soil such as weathered soil and rocks, tundra etc.

Main features

Abrasion resistant steel and diamond teeth, long service life.



类别 Category	单位 Unit	JT-06	JT-08	JT-10	JT-17	JT-20
A	mm	1150	1200	1450	1550	1650
B	mm	270	400	420	450	580
C	mm	550	665	735	820	980
D	mm	390	510	600	650	760
E	mm	265	335	420	470	580
F	mm	65	90	90	110	110
重量 Weight	kg	300-400	550-650	600-700	700-850	800-1000
适用挖机吨位 Carrier	ton	12-15	20-25	25-30	30-45	45-90

耙子 RAKE

适用对象

可以当多功能松土器，可以勾树根散石等。

特点

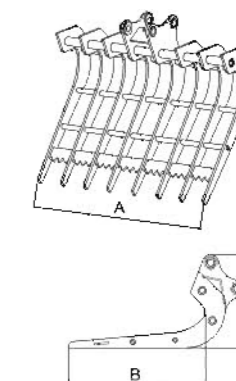
材质为保性能耐磨板材。

Application

Can be used as multi-functional ripper.

Main features

Abrasion resistant steel, long service life.



类别 Category	Unit	JT-04	JT-06	JT-08	JT-10	JT-17
长度A Length	mm	800	1000	1300	1500	1700
宽度B Width	mm	500	600	1000	1200	1400
高度A Height	mm	550	700	800	1000	1200
适用挖机 Carrier	ton	6-8	10-15	20-25	30-36	40-50
重量 Weight	kg	100	250	800	1100	1500

具体数据根据挖掘机型号及所配设备尺寸有所浮动，产品不断改进升级中，数据改动不再另行通知。
The specifications may vary with different excavators and are subject to change without prior notice for products improvement.