



体系认证



质量管理体系认证



专利证

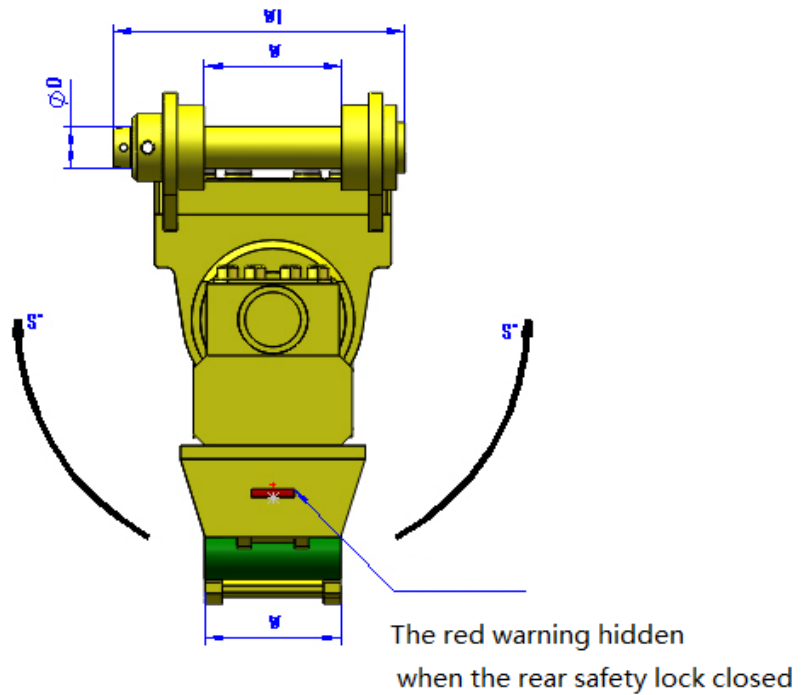
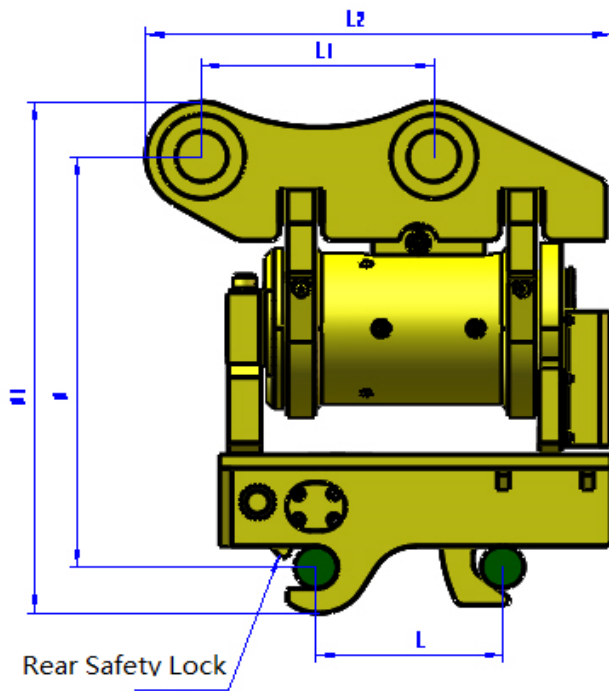


CE认证

Specification for Tilt Quick Coupler



Specification



Category/ Model	JT-00	JT-01	JT-02A	JT-02B	JT-04A	JT-04B	JT-06	JT-08
Tilt Degree	180°	180°	180°	180°	180°	180°	140°	140°
Drive Torque	930 NM	2870 NM	4400 NM	4400 NM	4400 NM	7490 NM	10623 NM	18600 NM
Tilt Displacement	0.627 L/MN	0.627 L/MN	1.016 L/MN	1.016 L/MN	1.016 L/MN	1.896 L/MN	2.3 L/MN	3.62 L/MN
Tilt Working Pressure	210 bar	210 bar	210 bar	210 bar	210 bar	210 bar	210 bar	210 bar
Tilt Necessary Flow	2-4 Lpm	5-16 Lpm	5-16 Lpm	5-16 Lpm	5-16 Lpm	15-44 Lpm	19-58 Lpm	35-105 Lpm
Quick Coupler Working Pressure	25-300 bar	25-300 bar	25-300 bar	25-300 bar	25-300 bar	25-300 bar	25-300 bar	25-300 bar
Necessary Flow	15-25 Lpm	15-25 Lpm	15-25 Lpm	15-25 Lpm	15-25 Lpm	15-25 Lpm	15-25 Lpm	15-25 Lpm
Excavator	0.8-1.5 Ton	2-3.5 Ton	4-6 Ton	4-6 Ton	7-9 Ton	7-9 Ton	10-16 Ton	16-22Ton
Overall Dimension (L2*W1*H1mm)	477*280*567	477*280*567	518*310*585	545*310*585	541*350*608	582*350*649	720*450*784	858*500*911
Weight	55 Kg	112 Kg	156 Kg	156 Kg	170 Kg	208 Kg	413 Kg	655 Kg

Main Features

- ◆ Tilt cylinder with higher torque ,safety design



- ◆ Double locking



- ◆ Extra high strength steel is used throughout body



- ◆ Variable pin centre design



- ◆ With a tilt angle of 0-180°



Application

Applied to change excavator attachments, like bucket, grapple, breaker, earth auger and so on. It enlarges excavator working range, saving time and improving efficiency.



Packing & Shipping

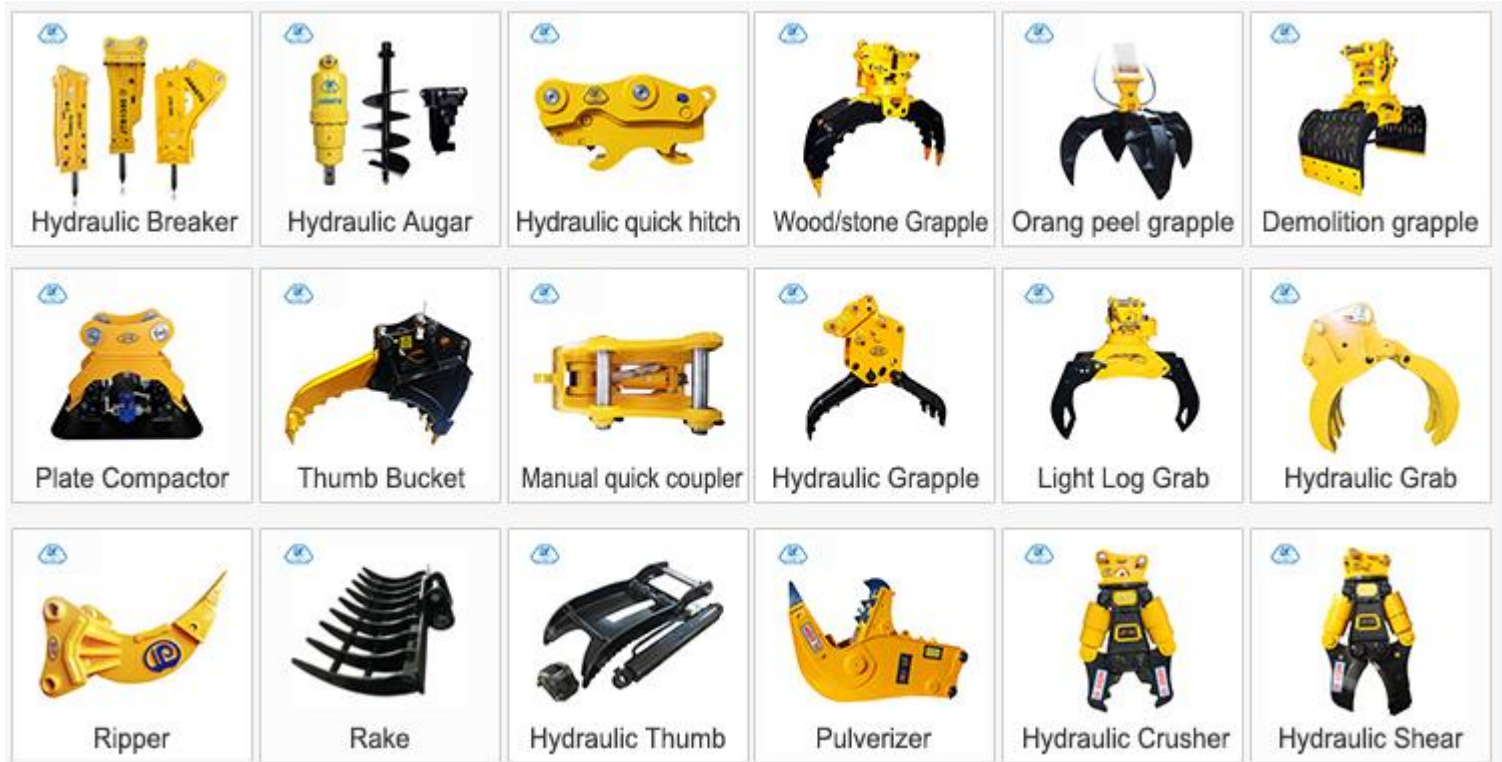


Manufacturing Equipments

- ◆ We have 10 years experience in manufacturing excavator attachments.
- ◆ With 6 professional engineers and 40 skilled workers, we aim to be your one stop solution provider.



Our Key Product



Our Service

- ◆ **Warranty Period:** 3-24 Months
- ◆ **Spare parts:** Enough spare parts for warranty are stocked.
- ◆ After-sales system and procedures were established to collect and analyze customer's feedback to take corrective actions.



Thank You!
We look forward to your cooperation!