



HYDRAULIC SHEAR

Operation Instruction



Yantai Jiangtu Mechanical Equipment Co., Ltd
Web: jtattach.com



scrap steels

iron

steels

demoliton

Hydraulic shears

Product introduction

Hydraulic Shear is suitable for various operations, including breaking the steel structure, processing scrap steel, cutting iron material, steel, tank and tube etc. Its unique design and innovative ways ensure the efficient operation and powerful cutting force, than ordinary hydraulic shear performance beyond 15%.



JTS-08



JTS-10







Product characteristics

Jaw size and special blade design increase productivity. Our hydraulic shears series can replace the blade quickly and conveniently. It can reduce machine downtime and optimize productivity.

- ※ Powerful hydraulic cylinders strengthened jaw mouth closing force, then can cut the most hardened steel
- ※ Hydraulic shears series are made of high-grade steel to ensure maximum strength of tool and the best wear resistance
- ※ Waterproof and corrosion-resistant design
- ※ Fully enclosed, steel structure, designed to eliminate or reduce any twisting or bending

Specification & Suitable Equipment

Applicable objects and scope

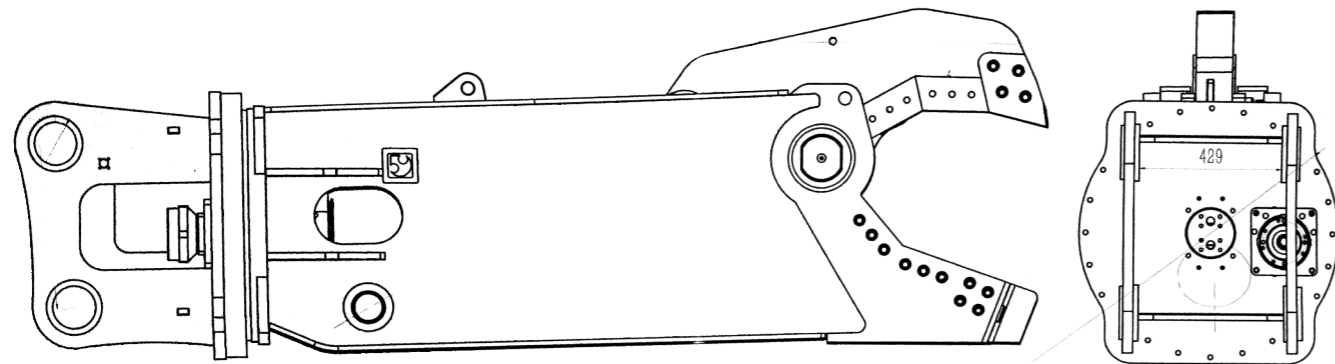
PHOTO	UNIT	JTS-04	JTS-06	JTS-08	JTS-10	JTS-12
	mm	4	6	8	10	12
	mm	Φ40	Φ50	Φ50	Φ60	Φ70
	mm	W150*80	W400*200	W500*200	W700*300	W800*300
	mm	Φ80*4	Φ120*6	Φ150*6	Φ200*8	Φ300*6
	mm	W100*20	W100*30	W150*30	W200*50	W200*60
	mm	50*50*6	100*100*5	100*100*5	150*150*8	200*200*8

Material containing alloy material.

Material containing alloy material.	Spring steel	Car drive shaft.	Strong steel and ultra - specification range of steel.
-------------------------------------	--------------	------------------	--

The above material is the range of the hydraulic shear cant beak ,If the equipment is damaged by forced cutting, our company will not give warrenty

Hydraulic shear drawing

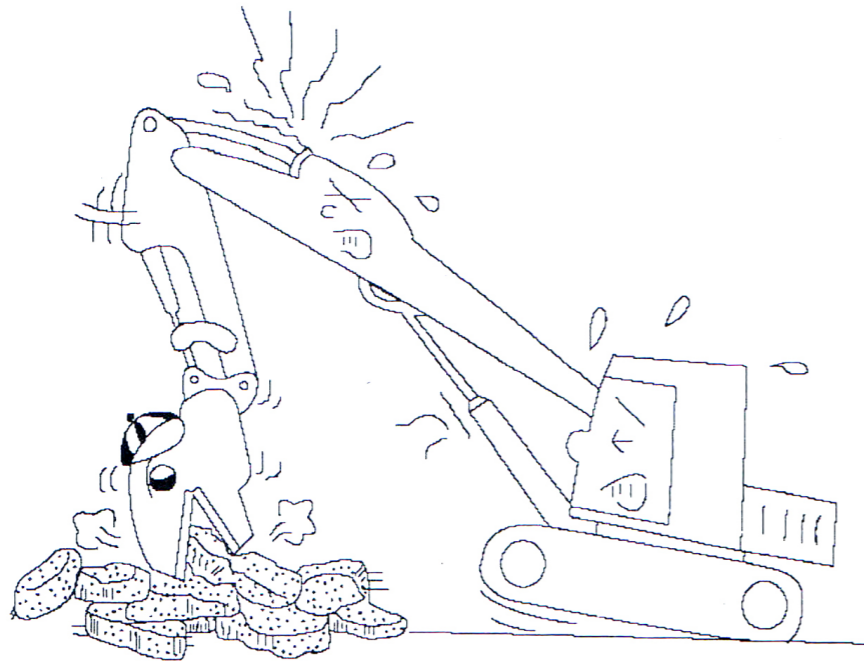


Performance Parameter

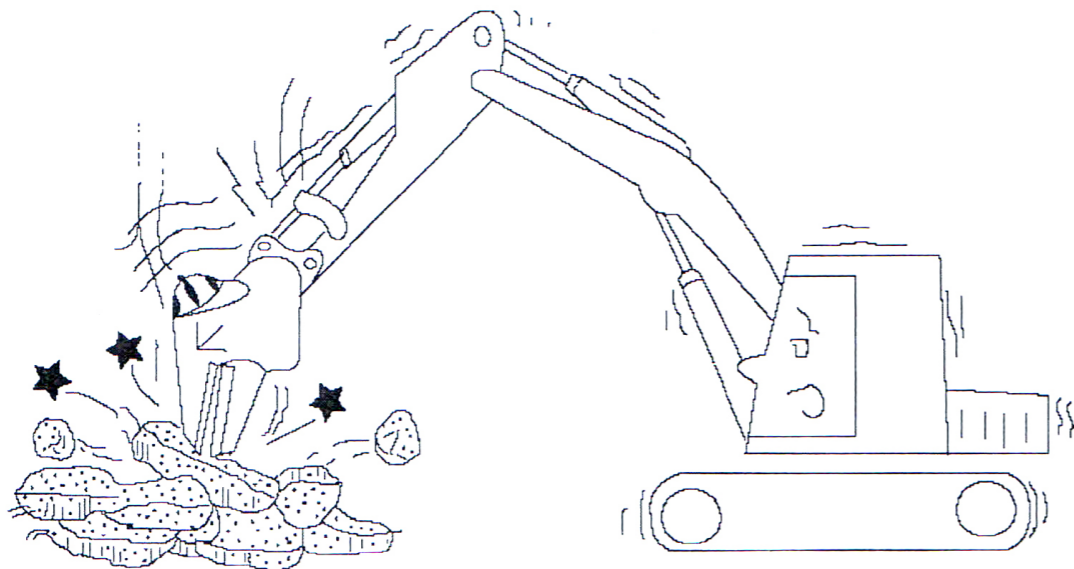
Module	Total Weight kg	Total Length mm	Max opening width mm	Max oil pressure Mpa	Hydraulic excavator T	Dimensions mm
JTS-04	700	1950	206	32	6T-12T	1950*450*520
JTS-06	1300	2500	350	32	10T-20T	2500*600*750
JTS-08	2300	2800	450	32	20T-30T	2800*700*1000
JTS-10	3150	3370	600	32	35T-45T	3370*800*1200
JTS-12	4900	3900	800	32	40T-50T	3900*880*1350

Operation

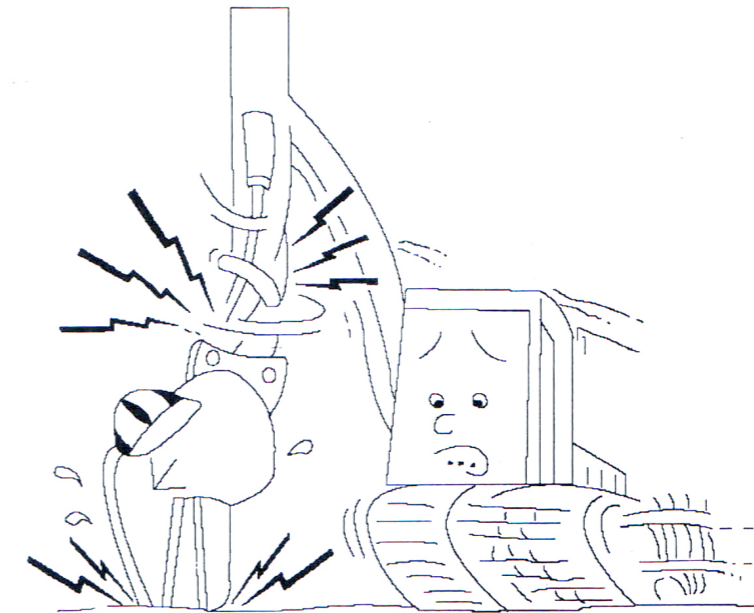
1) Do not operate the JIANGTU Attachments when the excavator cylinder rods are extended to their ends of stroke. If a large force is exerted to the fully extended cylinder, the excavator links and other parts may be damaged, bent or cracked.



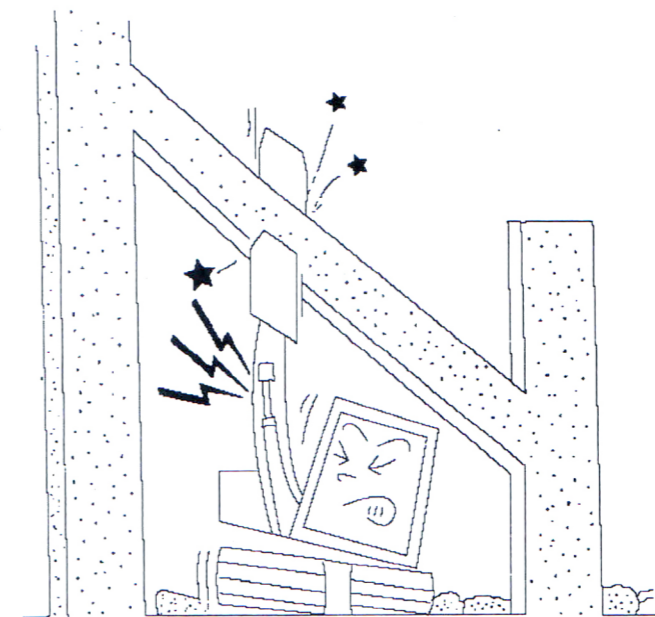
2) Do not use JIANGTU Attachments to pry, blow or pound objects. Otherwise, the shear and the excavator may be damaged.



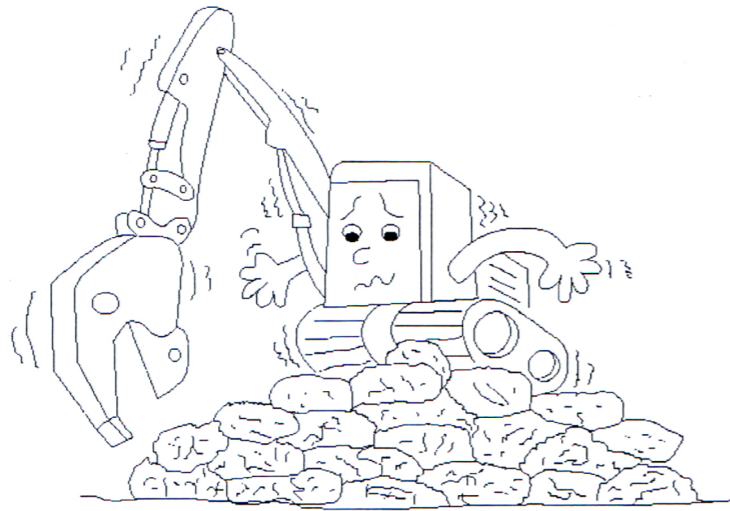
3) Do not press the JIANGTU attachments against the ground when the excavator turns around. Otherwise, excessive force is applied to the arm and pins, causing



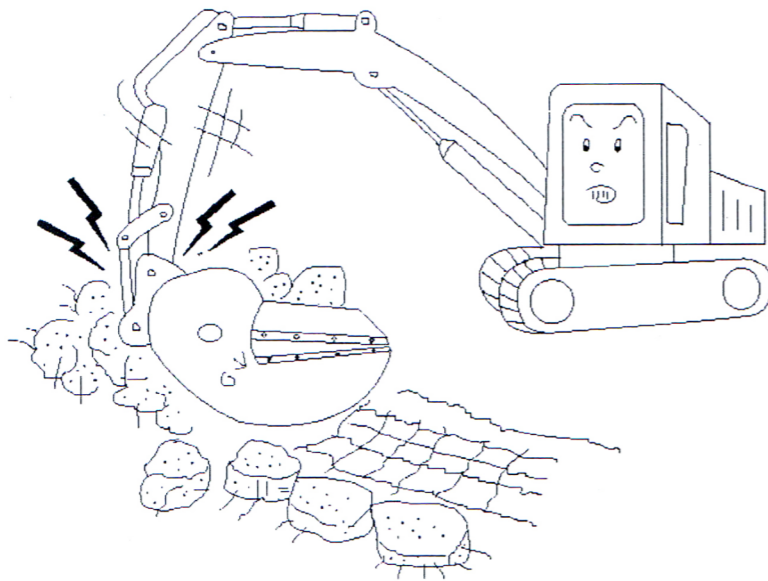
4) Place the hydraulic excavator on a flat area where it can stand stably and firmly. If the excavator is inclined, the excavator arm is subjected to excessive force and the arm may be cracked or twisted.



5) Do not use the JIANGTU Attachments to flatten out rough ground. Otherwise, the excavator is subjected force and may be damaged.



6) Do not bite concrete lumps with the reinforced rod cutter.



7) Do not run or swing the excavator while the JIANGTU Attachments holds an object.

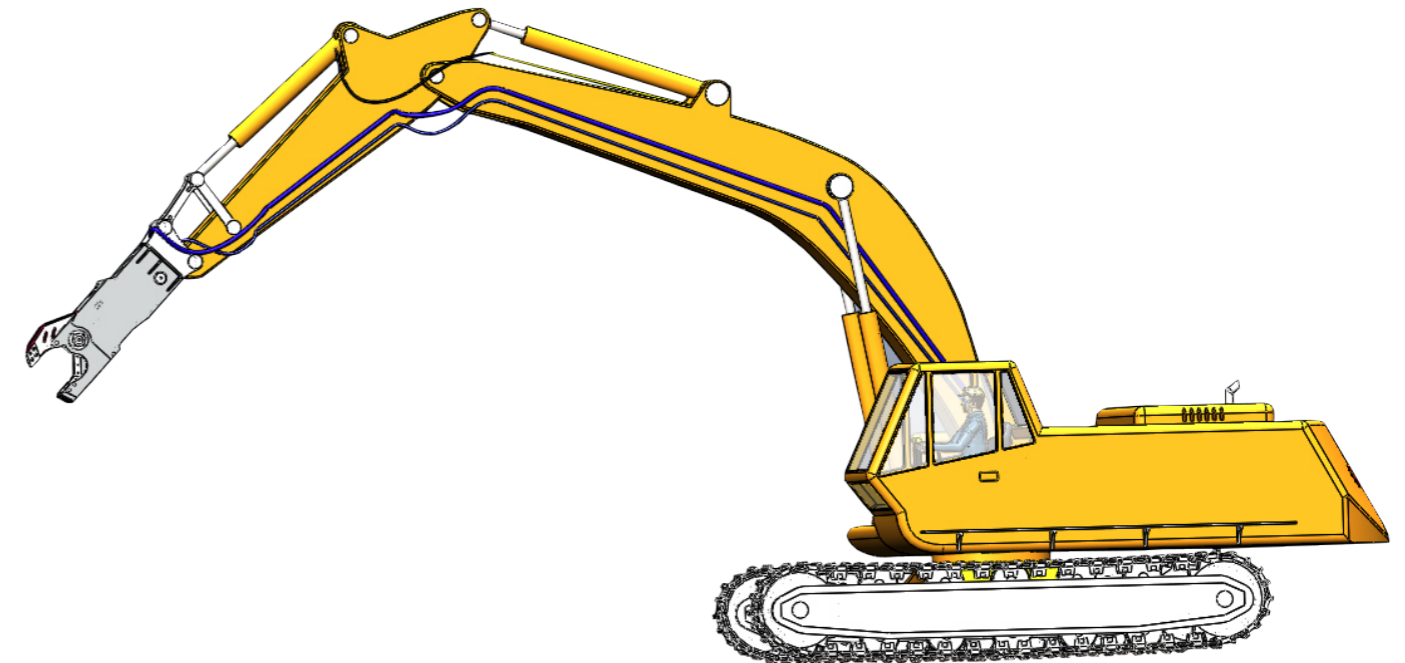
8) When the excavator travels with the JIANGTU Attachments, be sure to open the ends of the arms. This protects the piston rod against damage.

9) When leaving the excavator, put the JIANGTU Attachments on the ground and stop the engine.

Installation

1.1 Preparation before operation

- 1) Check the amount of hydraulic oil. If necessary, replenish the hydraulic oil of the same brand.
- 2) Make sure that stop valves are fully opened.
- 3) Before the operation, check that all bolts and nuts are tight. Loose bolts and nuts may cause problems such as oil leakage, bolt breakage and screw thread damage.
- 4) Be sure to apply grease to pins and bushing before use. Greasing is needed more than two times a day.
- 5) Operate the shear series without load and check for any abnormalities. Also check for oil leakage.



1.2 Set up Pressure

Module	Total Weight kg	Total Length mm	Max opening width mm	Max oil pressure Mpa	Hydraulic excavator T	Dimensions mm
JTS-04	700	1950	206	32	6T-12T	1950*450*520
JTS-06	1300	2500	350	32	10T-20T	2500*600*750
JTS-08	2300	2800	450	32	20T-30T	2800*700*1000
JTS-10	3150	3370	600	32	35T-45T	3370*800*1200
JTS-12	4900	3900	800	32	40T-50T	3900*880*1350

Maximum rated pressure should not exceed 35MPa, if the cylinder damaged due to high pressure, we don't provide warranty.

1.3 Installation

- 1) Put the JIANGTU Attachments on wooden square bars laid on the flat ground.
- 2) In the condition of turning off stop valve of excavator, adjust setting pressure for cylinder line and motor line. Please refer to chapter 1 for specific values respectively. When adjusting all kinds of pressure, please follow the advice by our A/S person or authorized personnel has made.
- 3) Stick to the excavator with two-bracket pin, and fasten bolt and nut together with stop ring. During assembling, pay attention to keep the straightness of both bush and holes of excavator using hand signal.
- 4) Open the union cap of stop valve and connect hoses of the shear. At this time, the oil residue in pipes is subject to flow out. so prepare an empty box to capture the flowing oil.
- 5) Turn on the stop valve and operate crusher after warming it up efficiently.
- 6) In case of motor type, please set the flow rate for motor in order to acquire proper revolution per minute 3-6 rpm.
- 7) If the excavator has quick coupler system, please stick JIANGTU Attachments to excavator in accordance with installation method of quick coupler manufacturers.
- 8) After completing all of the above, please fill in the delivery report and send it to us
- 9) When dismantling, the procedures are reversal of the method of assembly.

1.4 Matters needing attention

1) Crushing work

First, open the crushing arms, and then hold an object with tooth that is at the end of the crushing part and operate the crusher. When crushing the beams, keep the crushing arms in parallel with the object to keep crusher away from wrench.

This wrench causes damage to body and arms. The iron bar should cut in a straight line.

2) Swiveling

Motor Rotate Type. The type of motor is rotational and it rotates the body. It turns both clockwise and counterclockwise. If the pressure is beyond limits when rotating, a protector operates to prevent damage.

3) Work range

You can freely work within the range of the crusher arm. Operate the crusher at the correct position by operating the excavator boom and arm at the same time.

4) After completing all the steps above, please fill in a delivery report and e-mail to us.

Detection And Maintenance

1.1 Replacing the cutter blade

The cutter blade has four cutting edges. It can be replaced by screwing or unscrewing the bolts.

1) Replacement time

The cutter blade should be replaced at every 2 months.

2) Use at the reversed state

If one side of the cutter blade goes beyond 2R, use the cutter blade at the reversed state. Grind the used side with a grinder and attach the cutter blade so that the cutter may come into close contact with the cutter base.

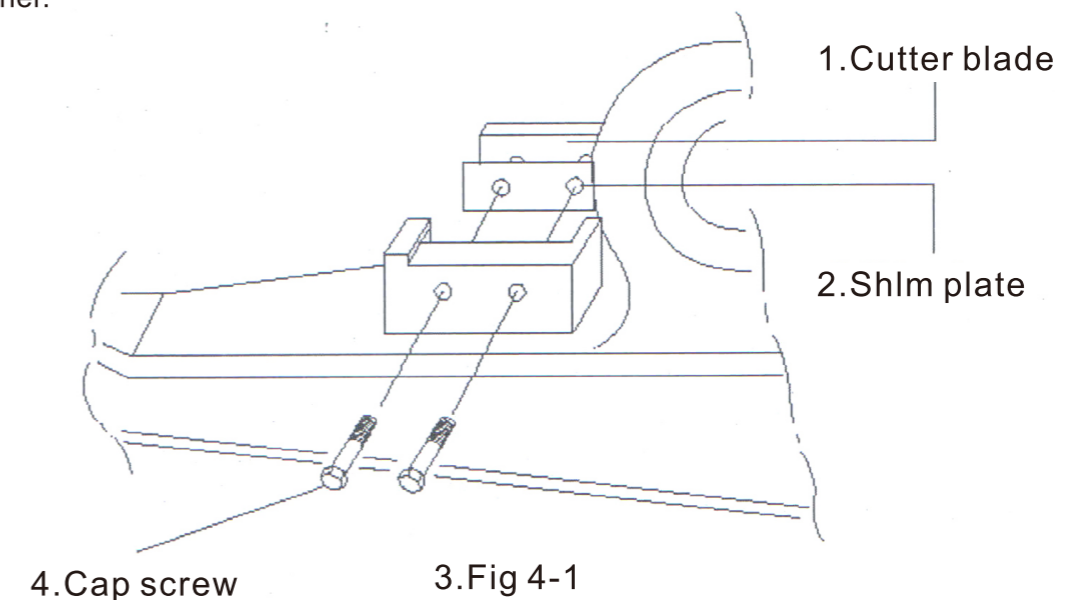
3) Mounting and adjustment

Fig. 4-1 shows how to remove the cap screw for mounting the cutter blade.

The shim plates for adjusting the cutter blade position can be removed together with the cutter blade.

Fig. 4-1 shows how to attach the new cutter blade by adjusting the number of shim plates to be set.

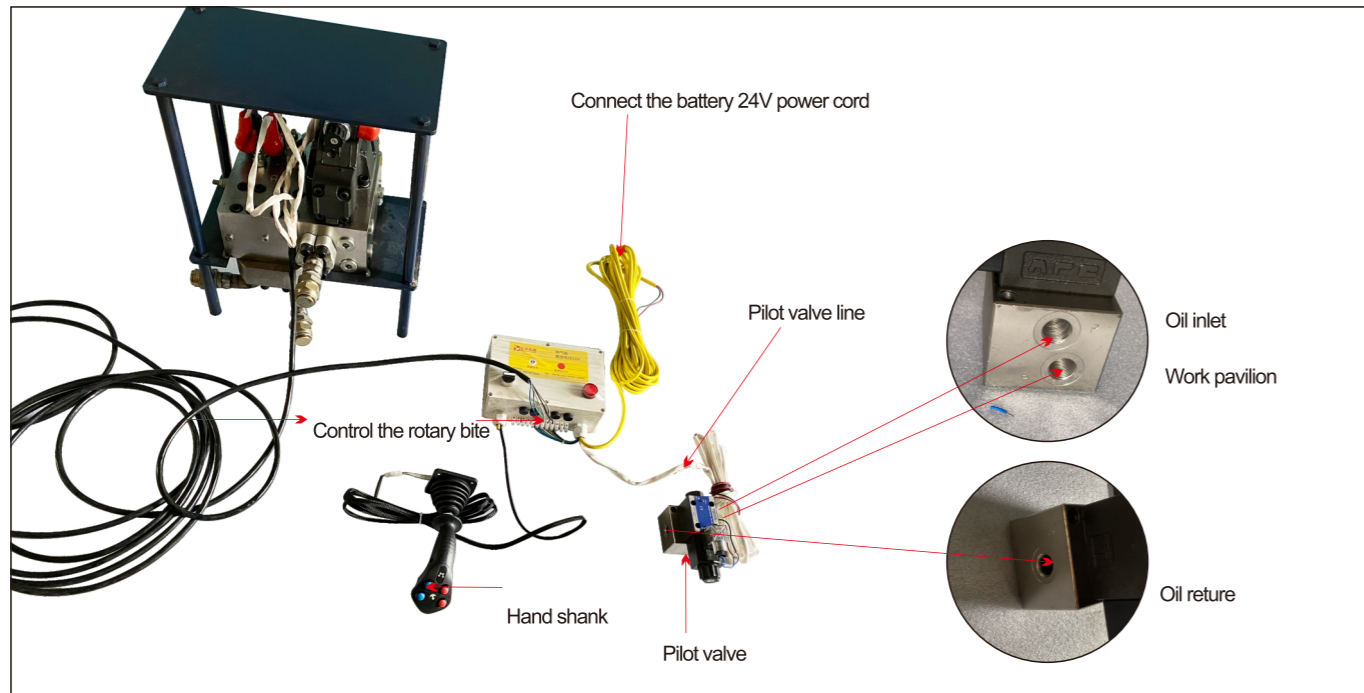
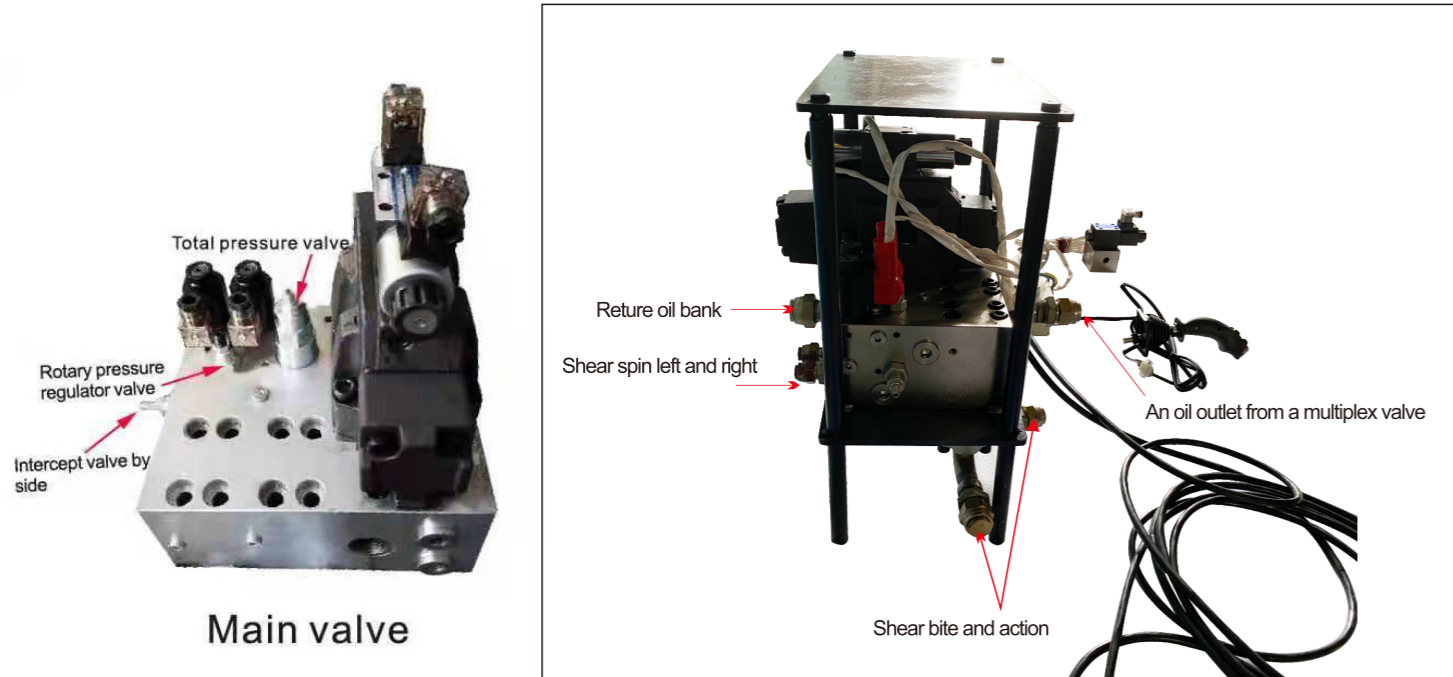
Tighten the cutter blade temporarily and then drive the blade with a wooden hammer so as to drive the blade to come into close contact with the cutter base and tighten the blade finally. Adjust the gap between two cutter blades to 0.5mm-1mm. If the gap is widened due to wears, adjust it again in the above manner.



1.2 Tubing connection

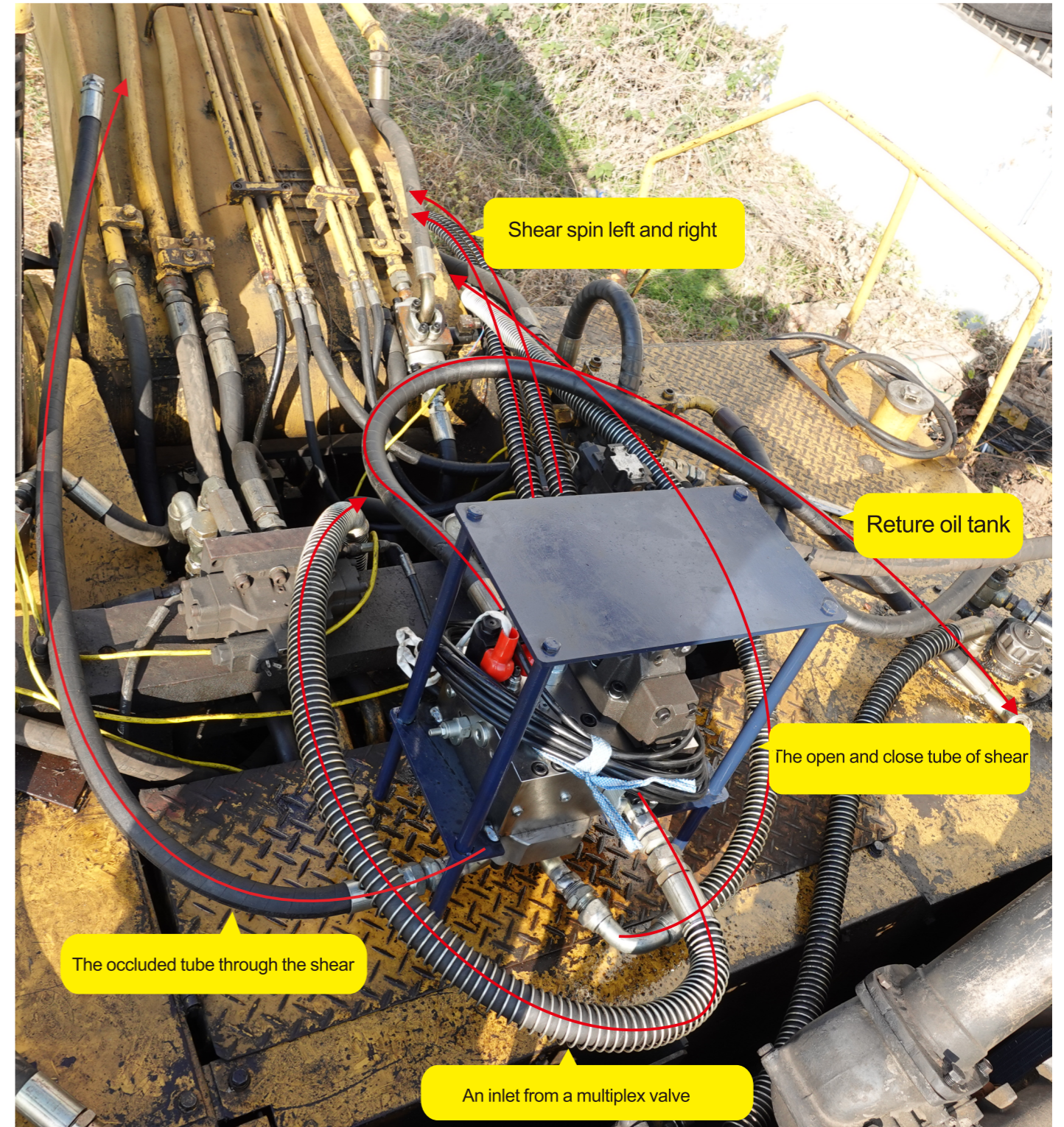
1. The hydraulic hose at the both ends of hydraulic pulverizer should be connected with the tube junction at both ends of the excavator head, tighten the nut.
2. Hydraulic hoses are not allowed to have sharp bends or wear, when broken or oil leakage, should be replaced immediately.
3. Before work, should check whether all parts are fractured or oil leakage.
4. The method is the opposite of disassembly procedures and installation.

The instruction of shear accessory parts

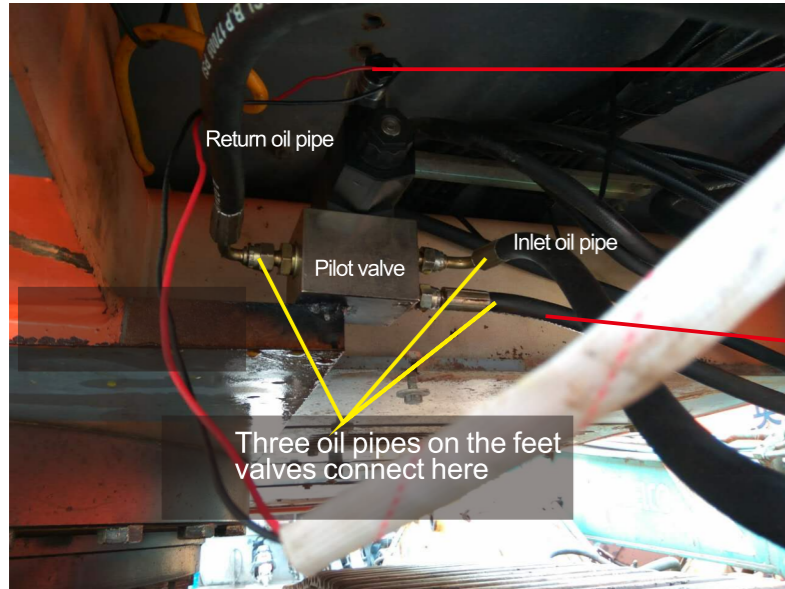


When the shear is connected with the tubing, pay attention to the connection of the tubing., Two smaller protrusions correspond to small holes in the gap between them.

Shear valve block installation indication drawing

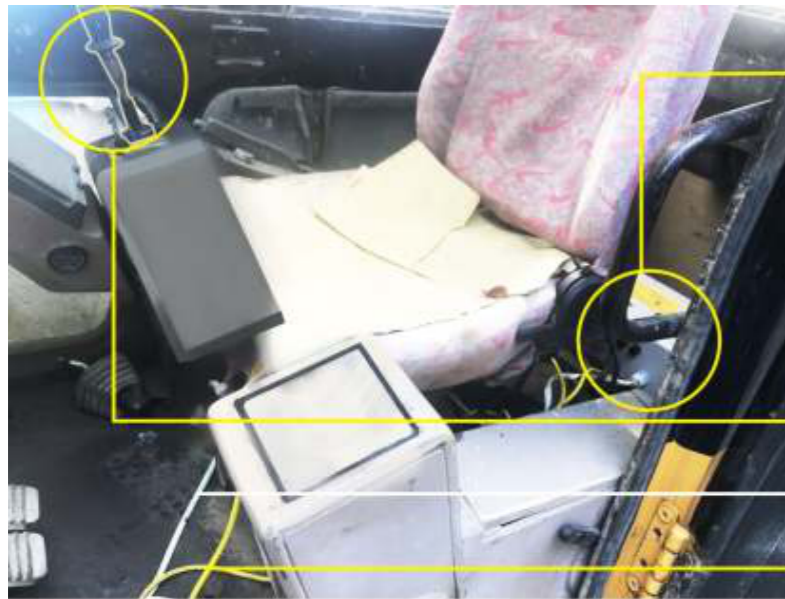


Install instruction



The two lines that come out of the box, this one is short.

Work pavilion



Electric box

Take down the right side of the hand shank and install on this one.

Pilot Valve Line

Main Power cable



The left and right tubing connects the hydraulic shear