

JIANGTU Multifunctional Grapple

Product Description

What is a [multifunctional grapple](#)? Just as its name implies, one grapple can perform multiple functions. It can help customers purchase a set of excavator grapple that can meet the needs of so many working conditions, just like stone, wood, grass, tree stump and other large scraps handling, moving, loading and organizing.

As one of the leading Excavator Grapple manufacturer in China, JIANGTU has a full range of hydraulic grapples for excavator from 1.5-40 ton. They are suitable for all kinds of brands and models of excavators.

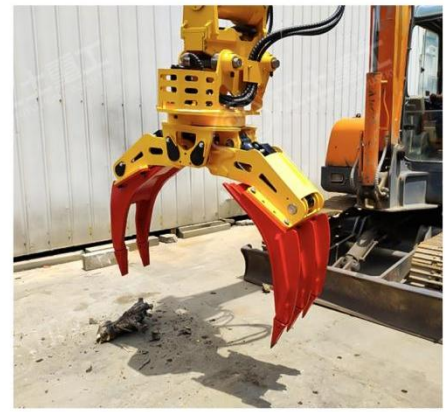


APPLICATION

This JIANGTU multifunctional grapple consists of a main body with five interchangeable claws. According to the working conditions, the multifunctional grapple can be used as the following five types:

❖ Wood grapple

It mainly grasps wood, single or bundled round wood, utility poles, steel pipes, bulk steel, stones, etc...



❖ Grass Grapple

It mainly grasps straw bales, sugarcane bales, bamboo bales, dry wood bales, etc...



❖ Stone/Steel Grapple

It mainly grasps round or square stones, utility poles, wastes, steel, etc...



❖ Square Materials Grapple

It mainly grasps crosstie, pillow stones, strip stone, masonry and other materials for municipal construction and road construction.



❖ Tree Stump Breaker

Mainly used for tree stump, tree root excavation and splitting, realizing drilling, cutting, digging, hooking and other functions.



FEATURES

Multifunctional grapple Main Features:

- 1). Integrate a variety of grabs, to replace the suitable grab flexibly according to different site working conditions.
- 2). Three connection way through the positioning pins connect to bolts,holes and nuts, to fix the grabs more firmly.
- 3). The swing angle of the left and right arms of the grapple body is 76°
- 4).When clamping, the torque of the cylinder is the largest, which meets the clamping force
- 5).Unlimited clockwise and anti-clockwise 360° rotatable swing bearing system;
- 6).Equipped with German-made M+S motor, more powerful and stable;





Product Advantage

The advantages and characteristics of JIANGTU multifunctional grapple :

1.The Jiangtu grapples are made of high-quality materials, excellent workmanship, precise processing, and superb welding technology. The Jiangtu grapples made of hardened and wear-resistant plates, which are purchased from domestic high-quality plate manufacturers and can withstand different working conditions.

The claws are made of high-quality low-carbon steel and wear-resistant materials, which can prolong the service life; each claw contains an integrally formed T-shaped bushing, which is more reliable in performance compared to other factories' products.

All pins are made of high-quality alloy steel, heat-treated, with high surface hardness, wear resistance and bending resistance; all pins have better surface finish and tighter fit clearance after grinding treatment.



2. The cylinder is equipped with a USA SUN brand balance valve to make the cylinder move smoothly and prevent the grapple from opening due to the oil pipe bursting; it is equipped with the M+S motor imported from Bulgaria/the Parker motor imported from the United States. The motor is equipped with a brake block with USA SUN brand double balance valves and double relief valves to reduce the impact during rotation and start or stop, and open smoothly



3. Optimized design of the structure, meets the requirements of lightweight and high grabbing efficiency; the buffer design of the cylinder, silent operation, reduces the impact of extreme

positions; the design of the special-shaped streamlined safety guard of the cylinder is added to facilitate the smooth insertion of the claws into different material piles while protecting the cylinder, balance valve and oil pipe from damage during working; the limit block protects the cylinder from impact and prolongs the service life.



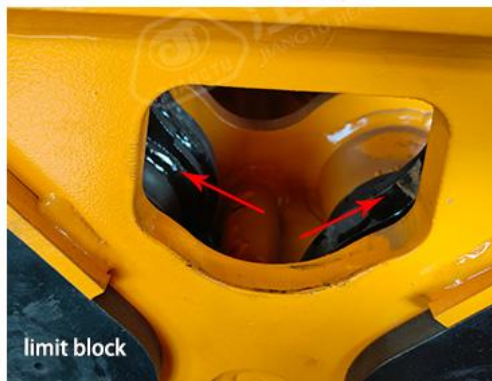
light weight high grabbing efficiency



Cylinder buffer design



special-shaped streamline safety guard for cylinder



limit block

4. Fittings and pipelines meet the industry's top standards, 4 times the impact resistance coefficient, high safety and reliability.



Why choose us ?

- 1.As the leading excavator attachments manufacturer in China, we have 10 years experience in developing and manufacturing excavator attachments.
2. Strong R&D department with 8 professional engineers and more than 70 skilled workers.
- 3.Strict QC system, ISO9001:2015 and CE certificate.
- 4.12 months warranty after receiving the product, 6 months free replacement.
5. The OEM/ODM and customization service is available.

A good attachment , how was it born?



Our Company Information

Yantai Jiangtu Mechanical Equipment Company is a leading manufacturer for excavator attachments in China. All products' quality are strictly under control from processing to delivery. By continuous innovation and improvement, the company has got ISO 9001, CE certifications and technical patents successively. Our products have been sold to widely domestic and oversea customers and long term partnerships have been developed.

Our mission is: Quality first, Service foremost, and Innovation paramount.

Uncompromising commitment to high quality and thoughtful service wins us a good reputation and more coming partners. And we will keep on improving the products to

better serve the world market. We are looking forward to working with you!

Company View



Our Certificate



Our Team

Aiming to deliver practical, easy-to-use and durable excavator attachments for global market, our R&D team size keeps growing. Currently, there are 8 professional engineers with an average researching experience of 4 years to meet customization demands. More than 70 skilled technicians have made it possible to guarantee the lead time and delivery date.

Our Exhibition



Our Team



Our Service

Our Service

1. We can offer a comprehensive range of excavator attachments such as hydraulic breaker, quick hitch, wood/stone grabs, log grapples, plate compactor, earth drill auger, orange peel grab, demolition grapple, grab bucket, ripper, etc...
2. You may rest assured that all of our products can be supplied in a wide range of designs,

and the product can be customized according to your personalized requirements. Meanwhile, we can offer an excellent after-sale service.

3. We will keep your business information confidential.

4. We promise to reply to you upon receipt of your inquiry within 12 hours .

5. The order will be produced exactly according to your detailed requirements and bucket dimensions. Each of attachment will be tested before delivery. Our QC will submit inspection report before shipment.


OEM

Offer your design documents or tell us your ideas and our R&D team will do the rest.

Warranty


JIANGTU Excavator Attachments are guaranteed against failure due to defective design, materials, or workmanship for a period of one year or 2,000 hours. Within first 6 months, we offer free replacement service.

Our Promise



OEM/ODM











Customized service
product customized according to customer' s requirements



After-sale service
24 hours online technical support service is available;

Guarantee
12 months warranty after receiving the product, 6 months free replacement.

Reviews from customers

M***I	★★★★★	2023/05/25
 France	Good quality awesome service	
M***s	★★★★★	2023/02/12
 Poland	Tilt hitch bardzo solidnie i starannie wykonane.	
S***L	★★★★★	2022/11/05
 United States	Everything is received.Great quality, the breaker power was very impressed. Thank you Grace	
O*****S	★★★★★	2022/03/09
 Argentina	thank for inviting I'm satisfied with the hydraulic breaker 🙌🙌🙌	
p*****J	★★★★★	2021/05/02
 Germany	The performance is good. TKS	

Packaging details

Port: Qingdao, Yantai, Shanghai etc.

Packing Type: Standard export packages.



Deliver by Sea / Air / Multimodal Transport / Logistics or Express Company is available.



FAQ

Q: Are you a manufacturer?

A: Yes, our factory was established in 2011.

Q: Are you sure your product will fit my excavator?

A: Yes, we are professional attachments manufacturer, We make attachments according to your excavator bucket dimensions.

Q: Can I customize a product?

A: Sure, we can provide OEM and ODM service.

Q: What's the MOQ and payment terms?

A: MOQ is 1 set. Payment by T/T, L/C, Credit Card and Western Union is acceptable. Other payment method can be negotiated.

Q: How about delivery time?

A: Usually 15 days subject to order quantity.

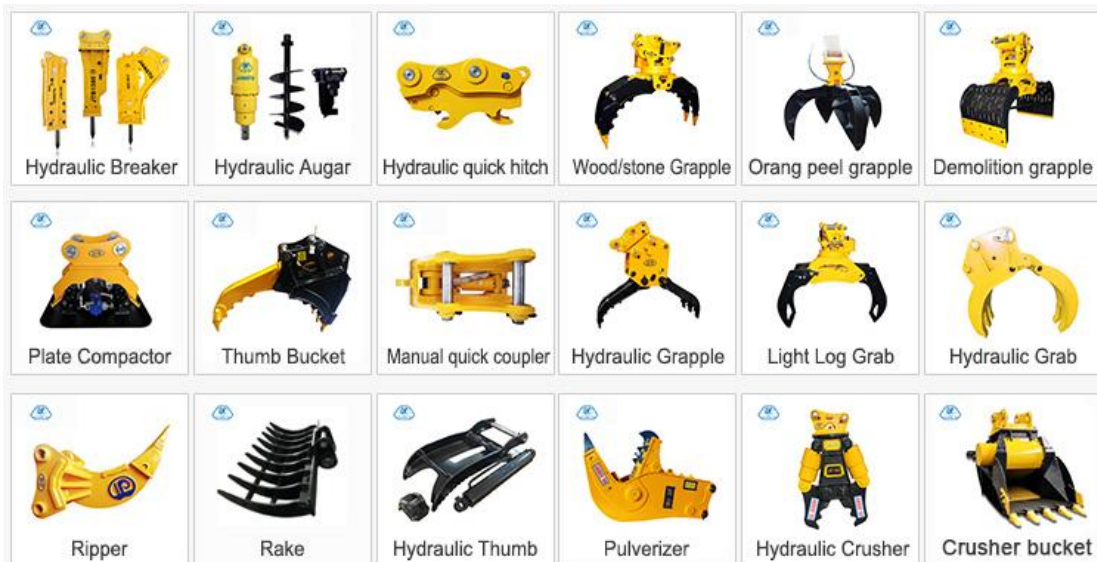
Q: How about the package?

A: Our attachments are packaged by standard export wooden cases free from fumigation.

Q: Which country have you been exported?

A: Russia, USA, Canada, Japan, Korea, Malaysia, Hong Kong, Taiwan, India, Indonesia, Australia, New Zealand, Israel, South Africa etc.

Best product we recommend



[Tell us the brand and model of your excavator, We are very glad to help you to select the right excavator grapple attachment.](#)

Yantai Jiangtu Mechanical Equipment Co., Ltd

Address:

No.84 Dawang Rd.,Fushan District, Yantai City, Shandong Province, China

Tel:

+86-15653818637(whatsapp)

E-mail:

ndwe73992@gmail.com

sales007@jtattach.com